

Air Drills

Perceuses pneumatiques
Druckluft-Bohrmaschinen
Taladros neumáticos
Trapani pneumatici

- | | | |
|----|----------------------|-----------------------------------------------------------------------------------------------------------------------------------------|
| 35 | 1 Series | Production Drills Perceuses de production Bohrmaschinen für Industrieinsatz Taladros para producción Trapani per produzione |
| 36 | Q2 Series | Production Drills Perceuses de production Bohrmaschinen für Industrieinsatz Taladros para producción Trapani per produzione |
| 38 | 5 to 7 Series | Production Drills Perceuses de production Bohrmaschinen für Industrieinsatz Taladros para producción Trapani per produzione |
| 40 | P33 Series | Precision Drills Perceuses de précision Präzisions-Bohrmaschinen Taladros de precisión Trapani di precisione |

Production Drills Selection Chart

Table de sélection des perceuses de production

Bohrmaschinen für die Industrie - Auswahltabelle

Cuadro de selección de taladros para producción

Tabella di selezione delle trapani per produzione



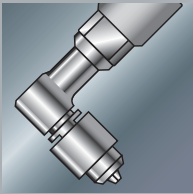
Pistol grip models
Modèles à poignée revolver
Modelle mit Pistolengriff
Modelos con empuñadura de pistola
Modelli con impugnatura a pistola

| Model No. | RPM | 0 | 5 Nm | 10 Nm | 15 Nm | 20 Nm | 25 Nm | 30 Nm | Page |
|----------------------|------------|--------|------|-------|-------|-------|-------|-------|------|
| 1 Series | 1AL1 | 2800 | █ | | | | | | 35 |
| | 1P38ST4 | 3800 | █ | | | | | | 35 |
| | 1P09ST4 | 900 | █ | █ | | | | | 35 |
| | 1P06ST4 | 600 | █ | █ | █ | | | | 35 |
| Q2 Series | QP512LD | 5100 | █ | | | | | | 36 |
| | QP511LD | 5100 | █ | | | | | | 36 |
| | QP381D | 3800 | █ | | | | | | 36 |
| | QP302LD | 3000 | █ | | | | | | 36 |
| | QP301LD | 3000 | █ | | | | | | 36 |
| | QP202D | 2000 | █ | █ | | | | | 36 |
| | QP201D | 2000 | █ | █ | | | | | 36 |
| | QP152D | 1500 | █ | █ | | | | | 36 |
| | QP151D | 1500 | █ | █ | | | | | 36 |
| | QP091D | 900 | █ | █ | | | | | 36 |
| | QP051D | 500 | █ | █ | █ | | | | 36 |
| 5 to 7 Series | 7ADST4-EU | 20 000 | █ | | | | | | 38 |
| | 5AJST4-EU | 4500 | █ | █ | | | | | 38 |
| | 5AKST4-EU | 3000 | █ | █ | | | | | 38 |
| | 7AHST4-EU | 6000 | █ | █ | | | | | 38 |
| | 5RALST6-EU | 2000 | █ | █ | | | | | 38 |
| | 5ALST4-EU | 2200 | █ | █ | | | | | 38 |
| | 7AJST4-EU | 4800 | █ | █ | | | | | 38 |
| | 7AKST6-EU | 3200 | █ | █ | | | | | 38 |
| | 5RANST8-EU | 900 | █ | █ | █ | | | | 38 |
| | 7ALST6-EU | 2400 | █ | █ | █ | | | | 38 |
| | 5ANST6-EU | 1000 | █ | █ | █ | | | | 38 |
| | 7AMST6-EU | 1400 | █ | █ | █ | █ | | | 38 |
| | 7ANST8-EU | 900 | █ | █ | █ | █ | █ | | 38 |
| | 7AQST8-EU | 600 | █ | █ | █ | █ | █ | █ | 38 |



Straight handle models
Modèles à poignée droite
Modelle in gerader Ausführung
Modelos con empuñadura recta
Modelli con impugnatura diritta

| | Model No. | RPM | 0 | 5 Nm | 10 Nm | 15 Nm | 20 Nm | 25 Nm | 30 Nm | Page |
|----------------------|-----------|------|---|------|-------|-------|-------|-------|-------|------|
| 1 Series | 1LL1 | 2800 | █ | | | | | | | 35 |
| | 1S30MF4 | 3000 | █ | | | | | | | 35 |
| | | | | | | | | | | |
| Q2 Series | QS511D | 5100 | █ | | | | | | | 36 |
| | QS381D | 3800 | █ | | | | | | | 36 |
| | QS301D | 3000 | █ | | | | | | | 36 |
| | QS151D | 1500 | █ | | | | | | | 36 |
| 5 to 7 Series | 5LJ1-EU | 4800 | █ | | | | | | | 39 |
| | 5LK1-EU | 3100 | █ | | | | | | | 39 |
| | 5LL1-EU | 2300 | █ | | | | | | | 39 |
| | 5LN3-EU | 1050 | █ | | | | | | | 39 |



Angle head models
Modèles d'angle
Modelle mit Winkelkopf
Modelos con cabeza angular
Modelli con testa ad angolo

| | Model No. | RPM | 5 Nm | 10 Nm | 15 Nm | 20 Nm | 25 Nm | 30 Nm | Page |
|----------------------|------------|------|------|-------|-------|-------|-------|-------|------|
| 1 Series | 1LJ1A1 | 3700 | █ | | | | | | 35 |
| | 1LL1A1 | 2700 | █ | | | | | | 35 |
| | | | | | | | | | |
| Q2 Series | QA2739D | 2700 | █ | | | | | | 37 |
| | QA2759D | 2700 | █ | | | | | | 37 |
| | QA1239D | 1270 | █ | | | | | | 37 |
| | QA0859D | 850 | █ | | | | | | 37 |
| | QA0539D | 500 | █ | | | | | | 37 |
| | QA0559D | 500 | █ | | | | | | 37 |
| 5 to 7 Series | 5LK1A4-EU | 3000 | █ | | | | | | 39 |
| | 5LL1A4-EU | 2200 | █ | | | | | | 39 |
| | 5LL2A41-EU | 1500 | █ | | | | | | 39 |
| | 5LN2A43-EU | 700 | █ | | | | | | 39 |
| | 7LM3A43-EU | 900 | █ | | | | | | 39 |
| | 7LN3A44-EU | 600 | █ | | | | | | 39 |

Production Drills
Perceuses de production
Bohrmaschinen für Industrieinsatz
Taladros para producción
Trapani per produzione

1
Series



Standard
Equipment

Variable speed control

Drill chuck and key

Soft touch, non-slip grip

Contrôle de la vitesse

Mandrin et clé de mandrin

Revêtement anti-dérapant

Variable Geschwindigkeitskontrolle

Bohrfutter und Schlüssel

Weicher, rutschfester Griff

Gatillo de velocidad variable

Portabrocas y llave

Empuñadura suave, antideslizante

Grilletto a velocità variabile

Mandrino e chiave

Impugnatura morbida, antiscivolo

Specifications at 90 psi – Caractéristiques à 620 kPa – Technische Daten bezogen auf 620 kPa
Especificaciones a 620 kPa – Caratteristiche a 620 kPa



1P38ST4

Pistol grip models
Modèles à poignée revolver
Modelle mit Pistolengriff
Modelos con empuñadura de pistola
Modelli con impugnatura a pistola

| Ref. | 1 min. rpm | Max. Nm | kg | mm | Max. mm | in | mm | l/min |
|-----------------------------------------------------------------------------------------------------------|---------------|------------|------|-----|------------|--------|------|-------|
| C TRIGGER START — DÉM. PAR GÂCHETTE — DRÜCKERSTART — ARRANQUE POR GATILLO — AVVIAMENTO A GRILLETTO | | | | | | | | |
| 1P06ST4 | 600 | 11.3 | 0.68 | 171 | 6 | 3/8-24 | 17 | 311 |
| 1P09ST4 | 900 | 7.6 | 0.68 | 171 | 6 | 3/8-24 | 17 | 311 |
| 1AL1 | 2800 | 1.70 | 0.65 | 159 | 6 | 3/8-24 | 16.5 | 311 |
| 1P38ST4 | 3800 | 2.30 | 0.65 | 159 | 6 | 3/8-24 | 17 | 311 |

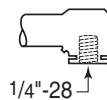
Straight handle models • Modèles à poignée droite
Modelle in gerader Ausführung • Modelos con empuñadura recta • Modelli con impugnatura diritta



1LL1

| Ref. | 1 min. rpm | Max. Nm | kg | mm | Max. mm | in | mm | l/min |
|------------------------------------------------------------------------------------------------|---------------|------------|------|-----|------------|--------|------|-------|
| C LEVER START — DÉM. PAR LEVIER — HEBELSTART — ARRANQUE POR PALANCA — AVVIAMENTO A LEVA | | | | | | | | |
| 1LL1 | 2800 | 1,70 | 0,51 | 194 | 6 | 3/8-24 | 17 | 311 |
| 1S30MF4 | 3000 | 1,90 | 0,54 | 186 | 6 | 3/8-24 | 16,5 | 311 |

Angle head models • Modèles d'angle
Modelle mit Winkelkopf • Modelos con cabeza angular • Modelli con testa ad angolo



| Ref. | 1 min. rpm | Max. Nm | kg | mm | Max. mm | mm | mm | l/min |
|------------------------------------------------------------------------------------------------|---------------|------------|------|-----|------------|----|-----|-------|
| C LEVER START — DÉM. PAR LEVIER — HEBELSTART — ARRANQUE POR PALANCA — AVVIAMENTO A LEVA | | | | | | | | |
| 1LL1A1 | 2700 | 1.6 | 0.51 | 234 | — | 28 | 8.5 | 311 |
| 1LJ1A1 | 3700 | 1.1 | 0.51 | 234 | — | 28 | 8.5 | 311 |

| Series / Baureihe | | | | |
|-------------------|---------|--------|----------|------|
| 1A... 1L... | 0.11 kW | 73 dBa | 1/8" NPT | 6 mm |
| 1P... 1S... | 0.14 kW | 73 dBa | 1/4" NPT | 6 mm |



See drill collets pages 37.
Pinces présentées page 37.
Spannzangen für Bohrmaschinen, siehe Seite 37.
Pinzas para taladros angulares presentadas en página 37.
Per le pinze per trapani, vedere pagina 37.



**Q2
Series**

Production Drills
Perceuses de production
Bohrmaschinen für Industrieinsatz
Taladros para producción
Trapani per produzione

**Standard
Equipment**

Variable speed control

Drill chuck and key

Soft touch, non-slip grip

Contrôle de la vitesse

Mandrin et clé de mandrin

Revêtement anti-dérapant

Variable Geschwindigkeitskontrolle

Bohrfutter und Schlüssel

Weicher, rutschfester Griff

Gatillo de velocidad variable

Portabrocas y llave

Empuñadura suave, antideslizante

Grilletto a velocità variabile

Mandrino e chiave

Impugnatura morbida, antiscivolo

Specifications at 90 psi – Caractéristiques à 620 kPa – Technische Daten bezogen auf 620 kPa
 Especificaciones a 620 kPa – Caratteristiche a 620 kPa



QP151D

Pistol grip models

Modèles à poignée révolver

Modelle mit Pistolengriff

Modelos con empuñadura de pistola

Modelli con impugnatura a pistola

| Ref. | 1 min. rpm | Max Nm | kg | mm | Max. mm | in | mm | l/min |
|-----------------------------------------------------------------------------------------------------------|---------------|-----------|--------|--------|----------------|--------|--------|-----------|
| C TRIGGER START — DÉM. PAR GÂCHETTE — DRÜCKERSTART — ARRANQUE POR GATILLO — AVVIAMENTO A GRILLETTO | | | | | | | | |
| QP051D | 500 | 9.8 | 0.70 | 184 | 6 | 3/8-24 | 15 | 450 |
| QP091D | 900 | 5.8 | 0.70 | 184 | 6 | 3/8-24 | 15 | 450 |
| QP151D | 1500 | 3.4 | 0.70 | 184 | 6 | 3/8-24 | 15 | 450 |
| QP152D | 1500 | 3.4 | 0.80 | 184 | 10 | 3/8-24 | 18 | 450 |
| QP201D | 2000 | 2.8 | 0.70 | 184 | 6 | 3/8-24 | 15 | 450 |
| QP202D | 2000 | 2.8 | 0.80 | 184 | 10 | 3/8-24 | 18 | 450 |
| QP301LD | 3000 | 1.8 | 0.65 | 171 | 6 | 3/8-24 | 15 | 450 |
| QP302LD | 3000 | 1.8 | 0.75 | 171 | 10 | 3/8-24 | 18 | 450 |
| QP381D | 3800 | 1.5 | 0.70 | 184 | 6 | 3/8-24 | 15 | 450 |
| QP511LD | 5100 | 1.1 | 0.65 | 171 | 6 | 3/8-24 | 15 | 450 |
| QP512LD | 5100 | 1.1 | 0.75 | 171 | 10 | 3/8-24 | 18 | 450 |

Straight handle models

Modèles à poignée droite

Modelle in gerader Ausführung

Modelos con empuñadura recta

Modelli con impugnatura diritta



QS151D

| Ref. | 1 min. rpm | Max Nm | kg | mm | Max. mm | in | mm | l/min |
|------------------------------------------------------------------------------------------------|---------------|-----------|--------|--------|----------------|--------|--------|-----------|
| C LEVER START — DÉM. PAR LEVIER — HEBELSTART — ARRANQUE POR PALANCA — AVVIAMENTO A LEVA | | | | | | | | |
| QS151D | 1500 | 3.80 | 0.62 | 205 | 6 | 3/8-24 | 15 | 450 |
| QS301D | 3000 | 1.90 | 0.62 | 205 | 6 | 3/8-24 | 15 | 450 |
| QS381D | 3800 | 1.50 | 0.62 | 205 | 6 | 3/8-24 | 15 | 450 |
| QS511D | 5100 | 1.20 | 0.62 | 205 | 6 | 3/8-24 | 15 | 450 |

Production Drills
Perceuses de production
Bohrmaschinen für Industrieinsatz
Taladros para producción
Trapani per produzione

Q2
Series



Angle head models
Modèles d'angle
Modelle mit Winkelkopf
Modelos con cabeza angular
Modelli con testa ad angolo



QA2759D with optional hanger

| Ref. | 1 min. rpm | Max. Nm | kg | mm | Max. mm | mm | mm | l/min | |
|------------------------------------------------------------------------------------------------|---------------|------------|------|------|------------|-----|----|-------|-----|
| C LEVER START — DÉM. PAR LEVIER — HEBELSTART — ARRANQUE POR PALANCA — AVVIAMENTO A LEVA | | | | | | | | | |
| | QA0539D | 500 | 12.8 | 0.62 | 221 | 4.8 | 27 | 9.5 | 450 |
| | QA1239D | 1270 | 4.5 | 0.62 | 221 | 4.8 | 27 | 9.5 | 450 |
| | QA2739D | 2700 | 2.3 | 0.62 | 221 | 4.8 | 27 | 9.5 | 450 |
| | QA0559D | 500 | 12.8 | 0.62 | 221 | — | 27 | 9.5 | 450 |
| | QA0859D | 850 | 7.6 | 0.62 | 221 | — | 27 | 9.5 | 450 |
| | QA2759D | 2700 | 2.3 | 0.62 | 221 | — | 27 | 9.5 | 450 |

Collets for Q2 angle drills
Pincas pour perceuses Q2
Spannzangen für Q2 Winkelbohrmaschinen
Pinzas para taladros angulares Q2
Pinze per trapani ad angolo Q2



| Ø mm | Ref. No. | Ø mm | Ref. No. | Ø mm | Ref. No. | Ø mm | Ref. No. | Ø mm | Ref. No. | Ø mm | Ref. No. |
|------|----------|------|----------|------|----------|------|----------|------|-----------|-------|-----------|
| 1.0 | 43497-60 | 1.7 | 43497-51 | 2.5 | 43497-38 | 3.5 | 43497-28 | 4.5 | 43497-15 | 5/64 | 43497-162 |
| 1.05 | 43497-58 | 1.8 | 43497-50 | 2.6 | 43497-37 | 3.6 | 43497-27 | 4.6 | 43497-14 | 3/32 | 43497-163 |
| 1.1 | 43497-57 | 1.9 | 43497-48 | 2.7 | 43497-35 | 3.7 | 43497-25 | 4.7 | 43497-13 | 7/64 | 43497-164 |
| 1.2 | 43497-56 | 2.0 | 43497-45 | 2.8 | 43497-33 | 3.8 | 43497-24 | 4.8 | 43497-11 | 1/8 | 43497-165 |
| 1.3 | 43497-55 | 2.1 | 43497-44 | 2.9 | 43497-32 | 3.9 | 43497-23 | 4.9 | 43497-9 | 9/64 | 43497-166 |
| 1.4 | 43497-54 | 2.2 | 43497-43 | 3.0 | 43497-31 | 4.0 | 43497-20 | 5.0 | 43497-8 | 5/32 | 43497-167 |
| 1.5 | 43497-53 | 2.3 | 43497-42 | 3.2 | 43497-30 | 4.3 | 43497-18 | 5.1 | 43497-7 | 11/64 | 43497-168 |
| 1.6 | 43497-52 | 2.4 | 43497-40 | 3.4 | 43497-29 | 4.4 | 43497-16 | 1/16 | 43497-161 | 3/16 | 43497-169 |

| Series / Baureihe | | | | |
|----------------------|---------|--------|----------|------|
| Q2 | 0.21 kW | 75 dBa | 1/4" NPT | 6 mm |



5 to 7 Series

Production Drills
Perceuses de production
Bohrmaschinen für Industrieinsatz
Taladros para producción
Trapani per produzione



Variable speed control

Drill chuck and key

Skinsulate™ Soft touch, non-slip grip on pistol models

Dead handle on models 5LN3-EU and 7AQST8-EU

Contrôle de la vitesse

Mandrin et clé de mandrin

Revêtement anti-dérapant Skinsulate™ sur modèles à poignée révolver

Poignée auxiliaire sur modèles 5LN3-EU et 7AQST8-EU

Variable Geschwindigkeitskontrolle

Bohrfutter und Schlüssel

Skinsulate™ Weicher, rutschfester Griff (Modelle mit Pistolengriff)

Hilfsgriff (für Modelle 5LN3-EU und 7AQST8-EU)

Gatillo de velocidad variable

Portabrocas y llave

Empuñadura suave, antideslizante Skinsulate™ (modelos de pistola)

Mango de sujeción para 5LN3-EU y 7AQST8-EU

Grilletto a velocità variabile

Mandriño e chiave

Impugnatura morbida, antiscivolo Skinsulate™ (modelli con impugnatura a pistola)

Impugnatura ausiliaria per 5LN3-EU e 7AQST8-EU



5RANST8-EU



5AJST4-EU



7AQST8-EU

Specifications at 90 psi – Caractéristiques à 620 kPa – Technische Daten bezogen auf 620 kPa
 Especificaciones a 620 kPa – Caratteristiche a 620 kPa

Pistol grip models
Modèles à poignée révolver
Modelle mit Pistolengriff
Modelos con empuñadura de pistola
Modelli con impugnatura a pistola

| Ref. | 1 min. rpm | Max Nm | kg | mm | Max. mm | in | mm | l/min |
|------------------------------------------------------------------------------------------------------------|---------------|-----------|------|-----|------------|--------|----|-------|
| DC TRIGGER START — DÉM. PAR GÂCHETTE — DRÜCKERSTART — ARRANQUE POR GATILLO — AVVIAMENTO A GRILLETTO | | | | | | | | |
| 5RANST8-EU | 900 | 8.00 | 1.40 | 210 | 13 | 3/8-24 | 21 | 480 |
| 5RALST6-EU | 2000 | 4.00 | 1.00 | 157 | 10 | 3/8-24 | 21 | 480 |
| C TRIGGER START — DÉM. PAR GÂCHETTE — DRÜCKERSTART — ARRANQUE POR GATILLO — AVVIAMENTO A GRILLETTO | | | | | | | | |
| 7AQST8-EU | 600 | 30.5 | 1.47 | 222 | 13 | 3/8-24 | 22 | 700 |
| 7ANST8-EU | 900 | 20.9 | 1.45 | 222 | 13 | 3/8-24 | 22 | 700 |
| 5ANST6-EU | 1000 | 9.00 | 1.25 | 207 | 10 | 3/8-24 | 21 | 480 |
| 7AMST6-EU | 1400 | 14.7 | 1.33 | 216 | 10 | 3/8-24 | 22 | 700 |
| 5ALST4-EU | 2200 | 4.50 | 0.90 | 173 | 6 | 3/8-24 | 21 | 480 |
| 7ALST6-EU | 2400 | 8.81 | 1.22 | 189 | 10 | 3/8-24 | 22 | 700 |
| 5AKST4-EU | 3000 | 3.40 | 0.90 | 173 | 6 | 3/8-24 | 21 | 480 |
| 7AKST6-EU | 3200 | 6.55 | 1.08 | 194 | 10 | 3/8-24 | 22 | 700 |
| 5AJST4-EU | 4500 | 2.30 | 0.90 | 173 | 6 | 3/8-24 | 21 | 480 |
| 7AJST4-EU | 4800 | 4.52 | 1.05 | 189 | 6 | 3/8-24 | 22 | 700 |
| 7AHST4-EU | 6000 | 3.73 | 1.05 | 189 | 6 | 3/8-24 | 22 | 700 |
| 7ADST4-EU | 20000 | 1.13 | 1.02 | 189 | 6 | 3/8-24 | 22 | 700 |

Production Drills
Perceuses de production
Bohrmaschinen für Industrieinsatz
Taladros para producción
Trapani per produzione

5 to 7
Series



Straight handle models
Modèles à poignée droite
Modelle in gerader Ausführung
Modelos con empuñadura recta
Modelli con impugnatura diritta



| Ref. | 1 min. rpm | Max. Nm | kg | mm | Max. mm | in | mm | l/min |
|------------------------------------------------------------------------------------------------|---------------|------------|------|-----|------------|--------|----|-------|
| C LEVER START — DÉM. PAR LEVIER — HEBELSTART — ARRANQUE POR PALANCA — AVVIAMENTO A LEVA | | | | | | | | |
| 5LN3-EU | 1050 | 9.00 | 1.50 | 238 | 10 | 3/8-24 | 21 | 480 |
| 5LL1-EU | 2300 | 4.50 | 0.90 | 205 | 6 | 3/8-24 | 21 | 480 |
| 5LK1-EU | 3100 | 3.40 | 0.90 | 205 | 6 | 3/8-24 | 21 | 480 |
| 5LJ1-EU | 4800 | 2.30 | 0.90 | 205 | 6 | 3/8-24 | 21 | 480 |

Angle head models
Modèles d'angle
Modelle mit Winkelkopf
Modelos con cabeza angular
Modelli con testa ad angolo



| Ref. | 1 min. rpm | Max. Nm | kg | mm | Max. mm | mm | mm | l/min |
|------------------------------------------------------------------------------------------------|---------------|------------|------|------|------------|-----|-----|-------|
| C LEVER START — DÉM. PAR LEVIER — HEBELSTART — ARRANQUE POR PALANCA — AVVIAMENTO A LEVA | | | | | | | | |
| | 5LL1A4-EU | 2200 | 4.5 | 1.00 | 249 | 4.8 | 30 | 9.0 |
| | 5LK1A4-EU | 3000 | 3.5 | 1.00 | 249 | 4.8 | 30 | 9.0 |
| | 7LN3A44-EU | 600 | 31.1 | 1.90 | 281 | 13 | 105 | 18 |
| | 5LN2A43-EU | 700 | 13.6 | 1.60 | 259 | 10 | 91 | 14 |
| | 7LM3A43-EU | 900 | 21.7 | 1.79 | 281 | 10 | 99 | 18 |
| | 5LL2A41-EU | 1500 | 6.8 | 1.20 | 239 | 6 | 75 | 14 |

Collets for models 5LL1A4-EU and 5LK1A4-EU
Pincas pour perceuses 5LL1A4-EU et 5LK1A4-EU
Spannzangen für 5LL1A4-EU und 5LK1A4-EU Modelle
Pinzas para taladros angulares 5LL1A4-EU y 5LK1A4-EU
Pinze per trapani ad angolo 5LL1A4-EU e 5LK1A4-EU

| Ø mm | Ref. No. | Ø mm | Ref. No. |
|------|-----------|-------|-----------|
| 2.0 | 43497-45 | 5/64 | 43497-162 |
| 2.5 | 43497-38 | 3/32 | 43497-163 |
| 3.0 | 43497-31 | 7/64 | 43497-164 |
| 3.5 | 43497-28 | 1/8 | 43497-165 |
| 4.0 | 43497-20 | 9/64 | 43497-166 |
| 4.5 | 43497-15 | 5/32 | 43497-167 |
| 5.0 | 43497-8 | 11/64 | 43497-168 |
| 1/16 | 43497-161 | 3/16 | 43497-169 |

| Series / Baureihe | | | | |
|-------------------|---------|--------|----------|------|
| 5 | 0.30 kW | 75 dBa | 1/4" NPT | 6 mm |
| 7 | 0.57 kW | 80 dBa | 1/4" NPT | 8 mm |

Air Tappers
Taraudeuses pneumatiques
Druckluft-Gewindeschneidmaschinen
Roscadoras neumáticas
Filettatrici pneumatiche

**Q2 &
7 Series**

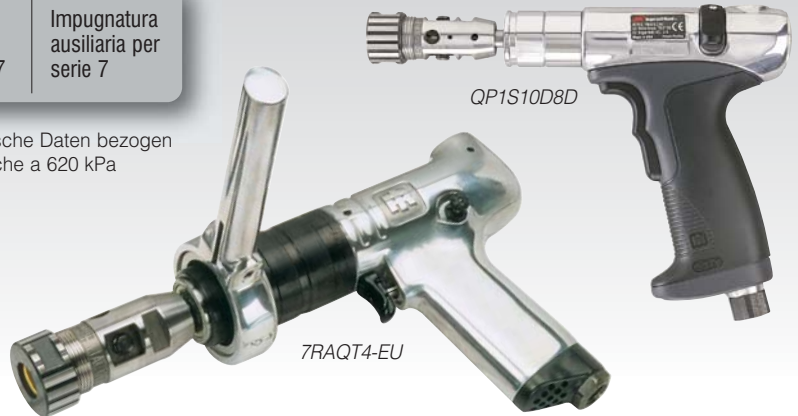


**Standard
Equipment**

| | | | | |
|----------------------------------|--------------------------------|-----------------------------|--------------------------------|------------------------------------|
| Dead handle assembly on 7 Series | Poignée auxiliaire sur série 7 | Hilfsgriff (für Baureihe 7) | Mango de sujeción para serie 7 | Impugnatura ausiliaria per serie 7 |
|----------------------------------|--------------------------------|-----------------------------|--------------------------------|------------------------------------|

Specifications at 90 psi – Caractéristiques à 620 kPa – Technische Daten bezogen auf 620 kPa – Especificaciones a 620 kPa – Caratteristiche a 620 kPa

| Series / Baureihe | | | | |
|-------------------|---------|--------|----------|------|
| Q2 | 0.24 kW | 75 dBa | 1/4" NPT | 6 mm |
| 7 | 0.44 kW | 79 dBa | 1/4" NPT | 8 mm |



| Ref. | 1 min. rpm | Max. Nm | kg | mm | Max. mm | in | mm | l/min |
|------------------------------------------------------------------------------------------------------------|---------------|---------|------|-----|---------|---------------|----|-------|
| DC TRIGGER START — DÉM. PAR GÂCHETTE — DRÜCKERSTART — ARRANQUE POR GATILLO — AVVIAMENTO A GRILLETTO | | | | | | | | |
| QP1S10D8D | 1000 | 5.2 | 0.85 | 183 | 6 | Conical (CM1) | 15 | 450 |
| QP1S05D8D | 500 | 9.8 | 0.85 | 183 | 6 | Conical (CM1) | 15 | 450 |
| 7RAQT4-EU | 475 | 27 | 1.50 | 300 | 13 | Conical (CM1) | 22 | 760 |

Air Multi-Function Drill
Perceuse multi-fonction pneumatique
Druckluft-Multi-Funktions-Bohrmaschine
Taladro neumático multi-funcional
Trapano pneumatico multi-funzioni

**MS
Series**



**Standard
Equipment**

| | | | | |
|-------------------|------------------------|----------------------|-----------------------|-------------------------|
| Direct drive | Entraînement direct | Direktantrieb | Accionamiento directo | Trasmissione diretta |
| Horizontal hanger | Suspension horizontale | Horizontal-Aufhänger | Suspensión horizontal | Sospensione orizzontale |

Specifications at 90 psi – Caractéristiques à 620 kPa – Technische Daten bezogen auf 620 kPa – Especificaciones a 620 kPa – Caratteristiche a 620 kPa

| Series / Baureihe | | | | |
|-------------------|---------|--------|----------|------|
| MS | 0.33 kW | 78 dBa | 1/4" BSP | 9 mm |



| Ref. | 1 min. rpm | Max. Nm | kg | mm | Max. mm | in | mm | l/min |
|------------------------------------------------------------------------------------------------------------|---------------|---------|------|-----|---------|--------|----|-------|
| DC TRIGGER START — DÉM. PAR GÂCHETTE — DRÜCKERSTART — ARRANQUE POR GATILLO — AVVIAMENTO A GRILLETTO | | | | | | | | |
| MS2206RP5-Q4 | 600 | 11 | 1.00 | 190 | 8 | 1/4" Ⓞ | 20 | 570 |

Options



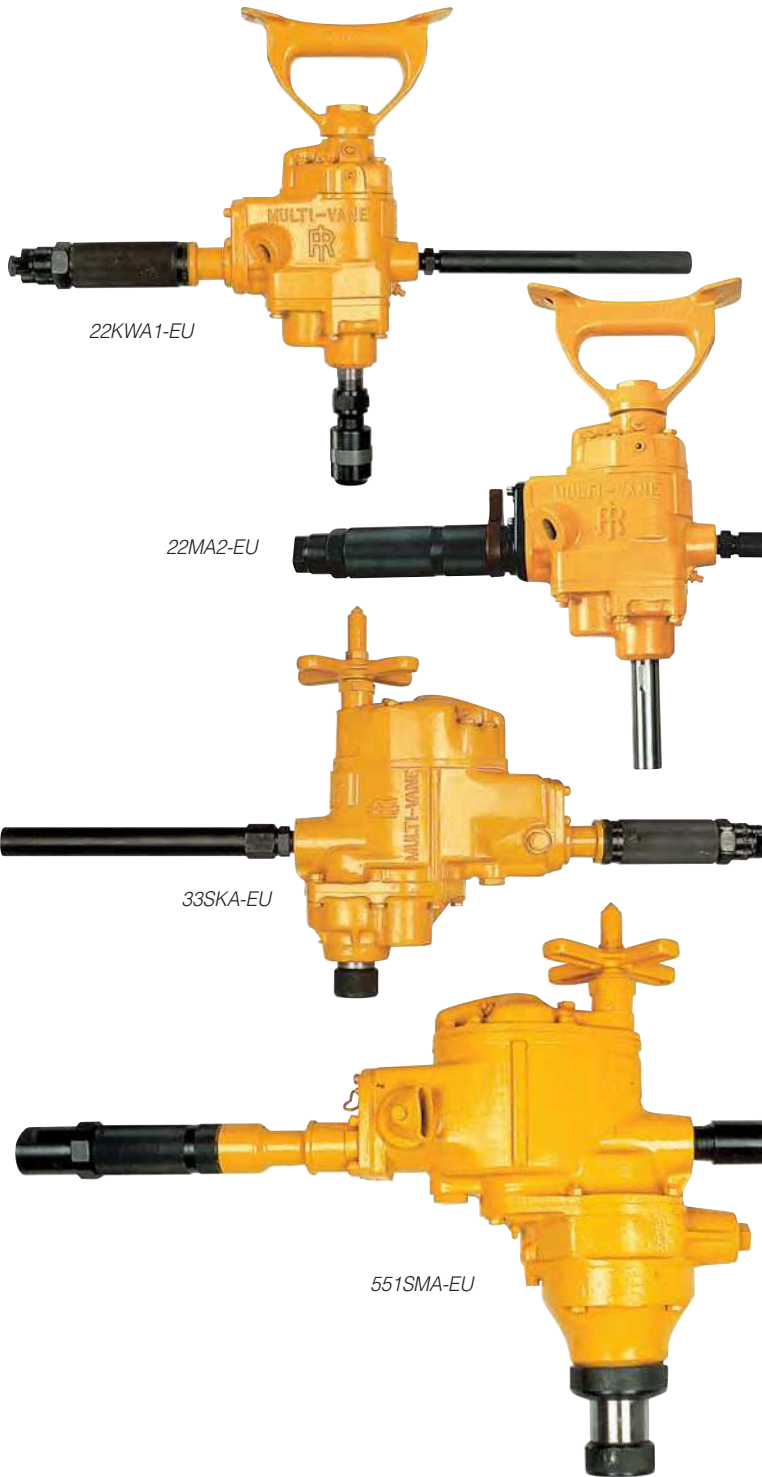
Ø 0-8 mm:
Ref. **123182**
Ø 1-10 mm:
Ref. **123205**



Ø 0-6 mm:
Ref. **123203**
Ø 1-10 mm:
Ref. **123204**



Large Drills
Perceuses Grande Capacité
Große Winkelbohrmaschinen
Taladros Grandes
Trapani Pesanti

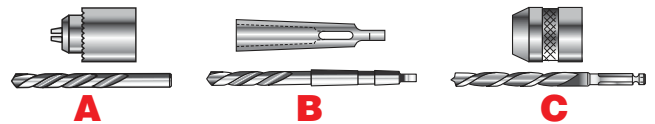


Standard Equipment



- Built-in lubricator.
- Lubricateur incorporé.
- Integrierter Öl
- Lubricador incorporado.
- Lubrificatore incorporato.

- Attachments available: chuck (A), morse taper (B) or wood bit chuck (C).
- Porte-forêts disponibles: mandrin (A), cône morse (B) ou mandrin rapide pour forêt bois (C).
- Lieferbare Einsätze: Bohrfutter (A), Morsekonus (B), Futter für Holz-Bohrklingen (C).
- Porta-brocas disponibles: mandril (A), cono morse (B) o mandrillo rápido para taladro madera (C).
- Porta-punte disponibili: mandrino (A), cono a morsa (B), oppure mandrino rapido per punte da legno (C).



Specifications at 90 psi – Caractéristiques à 6,2 bar – Technische Daten bezogen auf 6,2 bar – Especificaciones a 6,2 bar – Caratteristiche a 6,2 bar

| Ref. | kWatt | 1 min. | | | | | | H | | |
|-----------|-------|--------|-------------------|----|----|----|------|-----|----------|----|
| | kW | rpm | | mm | mm | mm | kg | mm | in (NPT) | mm |
| 22KA1-EU | 1.30 | 725 | A 0-1/2" | 14 | 11 | 11 | 7.0 | 448 | 3/8 | 13 |
| 22KWA1-EU | 1.30 | 725 | C 1/2" (1) | 14 | – | – | 6.5 | 438 | 3/8 | 13 |
| 22MA2-EU | 1.30 | 350 | B No. 2 | 22 | 16 | 16 | 6.5 | 473 | 3/8 | 13 |
| 33SKA-EU | 2.20 | 300 | B No. 3 | 32 | 25 | 28 | 11.7 | 355 | 1/2 | 19 |
| 33SMA-EU | 2.20 | 185 | B No. 3 | 32 | 32 | 41 | 14.1 | 427 | 1/2 | 19 |
| 44SMA-EU | 2.68 | 155 | B No. 4 | 51 | 51 | 51 | 19.8 | 463 | 1/2 | 19 |
| 551SMA-EU | 4.66 | 120 | B No. 5 | 76 | 64 | 64 | 31.3 | 556 | 1 | 25 |

(1) 1/2" stub taper, threaded – Broche fileté 1/2" – 1/2" konischer Gewindestutzen – Alojamiento cónico de 1/2" roscado – Perno conico filettato 1/2".